

UrbanAID

NextGen: the next of affordable housing for Australia

Professor Tom Barker, UrbanAid, DAB

Project partner: Prof Mark Burry, SIAL RMIT

Sessional tutor: Adam Russell of Draw

Contributors: DAB Architects Adrian Lahoud and Tarsha Finney, architects and urban designers John Wardle Architects, Craig Allchin of Six Degrees, Ben Derbyshire of HTA Architects (UK); developers Grocon, Campus Living Villages; environmental philosopher Prof Andrew Brennan of La trobe; social capital and communities Prof Jennifer Onyx

Overseas architects and town planners have been scathing about most of our modern ... buildings

We are being forced to abandon the Australian attitude of one house for one family, on its own little plot of land, and to move into flats. The change has, on the whole, been architecturally disastrous

The spirit of modernism never really penetrated here - only shallow imitations and pompous notions that there is such a thing as a uniquely Australian architecture

For the general mass of Australian housing, apart from comfort standards, the only word is 'rubbish'

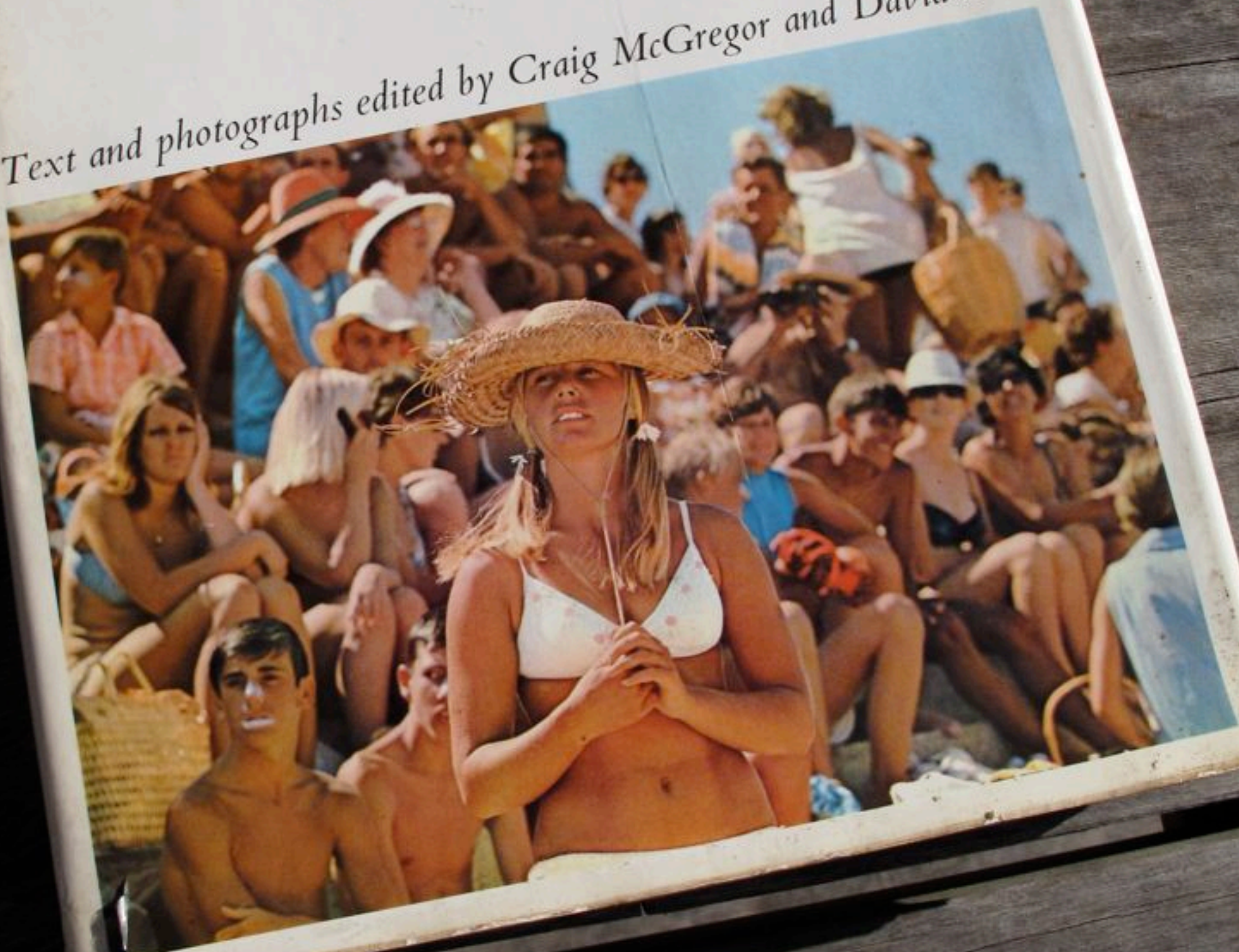
But there is hope because a new generation of students is better educated and puts culture and process over style..

Harry Seidler
Ken Woolley
David Saunders
Robin Boyd
Charles Duncan
Guilford Bell

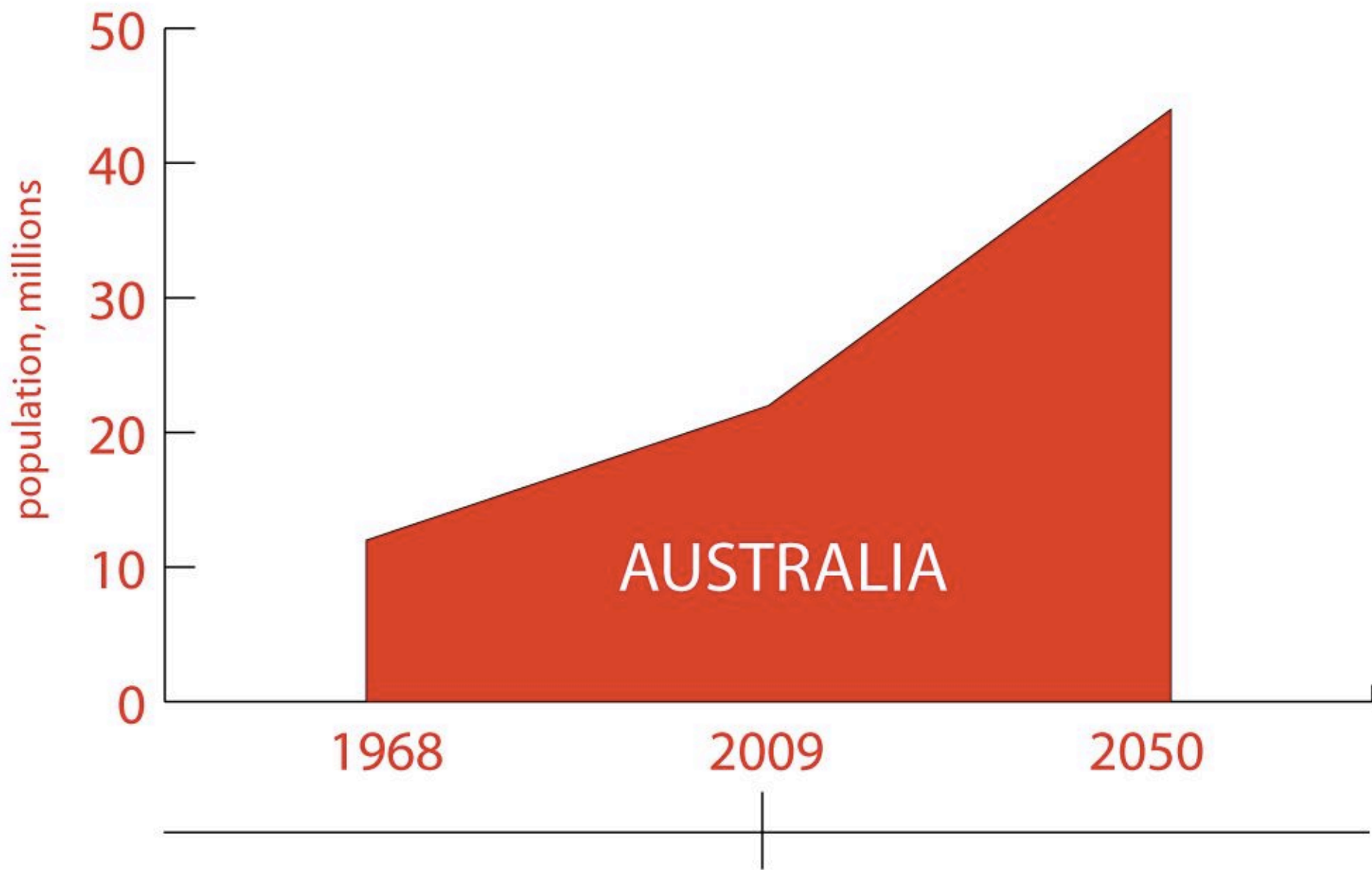
1971

Life in Australia

Text and photographs edited by Craig McGregor and David Beal







40% of all housing was
built in the last 40 years

50% of all housing will be
built in the next 40 years

Tradies find work in cyberspace



Ultra-compact house of future proves big things come in small packages

Paul Wilson
A tiny house, no bigger than a car, is being built in a Sydney suburb. It is the smallest house ever built in Australia and is expected to be the smallest house ever built in the world. The house is built on a small plot of land and is expected to be the smallest house ever built in the world. The house is built on a small plot of land and is expected to be the smallest house ever built in the world.

Out of the blue: shock as solar rebate cut

Robert Butler

The government has announced a shock cut to the solar rebate, which will mean that many homeowners will no longer be able to claim the rebate. This is a significant move as the solar rebate has been a major incentive for homeowners to install solar panels. The cut is expected to take effect from the start of the next financial year.

Science on the building site

Mass-market housing is on the way to being neutral, writes Cheryl Jones

It is the science of building that is changing the way we live. The use of new materials and techniques is making it possible to build houses that are more energy efficient and more sustainable. This is a significant move as the building industry is one of the largest contributors to greenhouse gas emissions. The new houses are expected to be more comfortable and more durable than traditional houses.

Fears home insulation boom creates a climate where fungi flourish

Billy Barker

While good to make buildings more energy efficient, the insulation boom has created a climate where fungi can flourish. This is a concern as fungi can cause health problems and damage to buildings. The problem is that the insulation is often installed in a way that traps moisture, which creates a perfect environment for fungi to grow.

Scarce credit hits units, slows recovery

John Ballin

A shortage of credit is hitting the unit market, slowing the recovery. This is a problem as units are a popular form of housing for many people. The shortage of credit is due to banks being cautious about lending to the unit market. This is a concern as units are a key part of the housing market.

Lower-market activity heats up \$1m Sydney homes

Robert Harley

Activity in the lower-end of the Sydney housing market is heating up, with many people looking for homes under \$1m. This is a positive sign for the housing market as it shows that there is still demand for affordable housing. The activity is driven by a combination of factors, including low interest rates and a shortage of affordable housing.

Heritage homes hammered



Box sweet box: it's the ultimate flat pack

Martha Dutton

A new type of flat pack house, called the 'Box Sweet Box', is being marketed as the ultimate flat pack. It is a small, modular house that can be assembled in a matter of hours. This is a significant move as it makes it easier for people to get a house without the need for a large construction site. The house is made of wood and is designed to be eco-friendly.

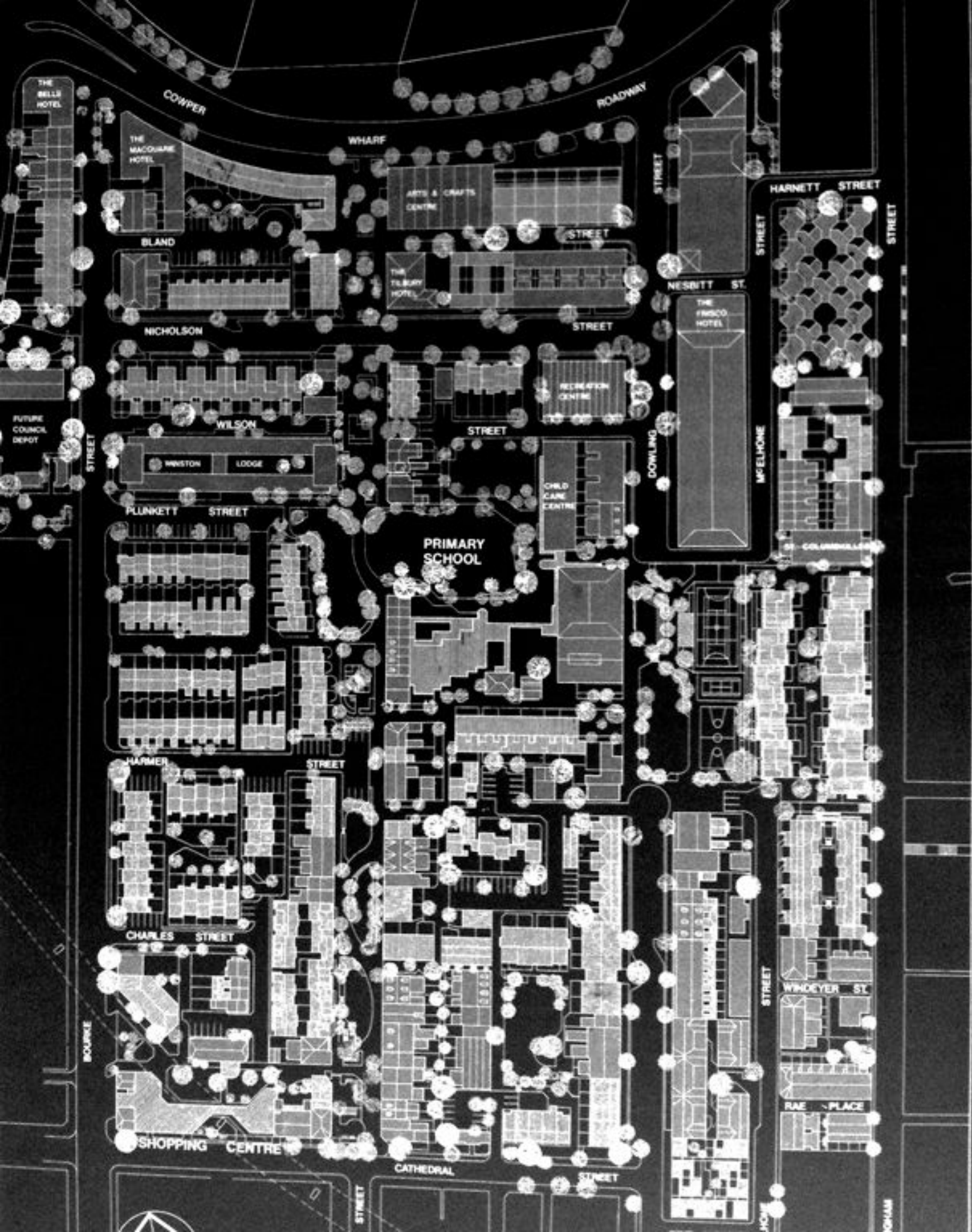
Australian housing is the least affordable on this planet

with an affordability index of 6.3
compared with 5.3 in the UK and 3.2 in USA

\$62,000 = average earnings

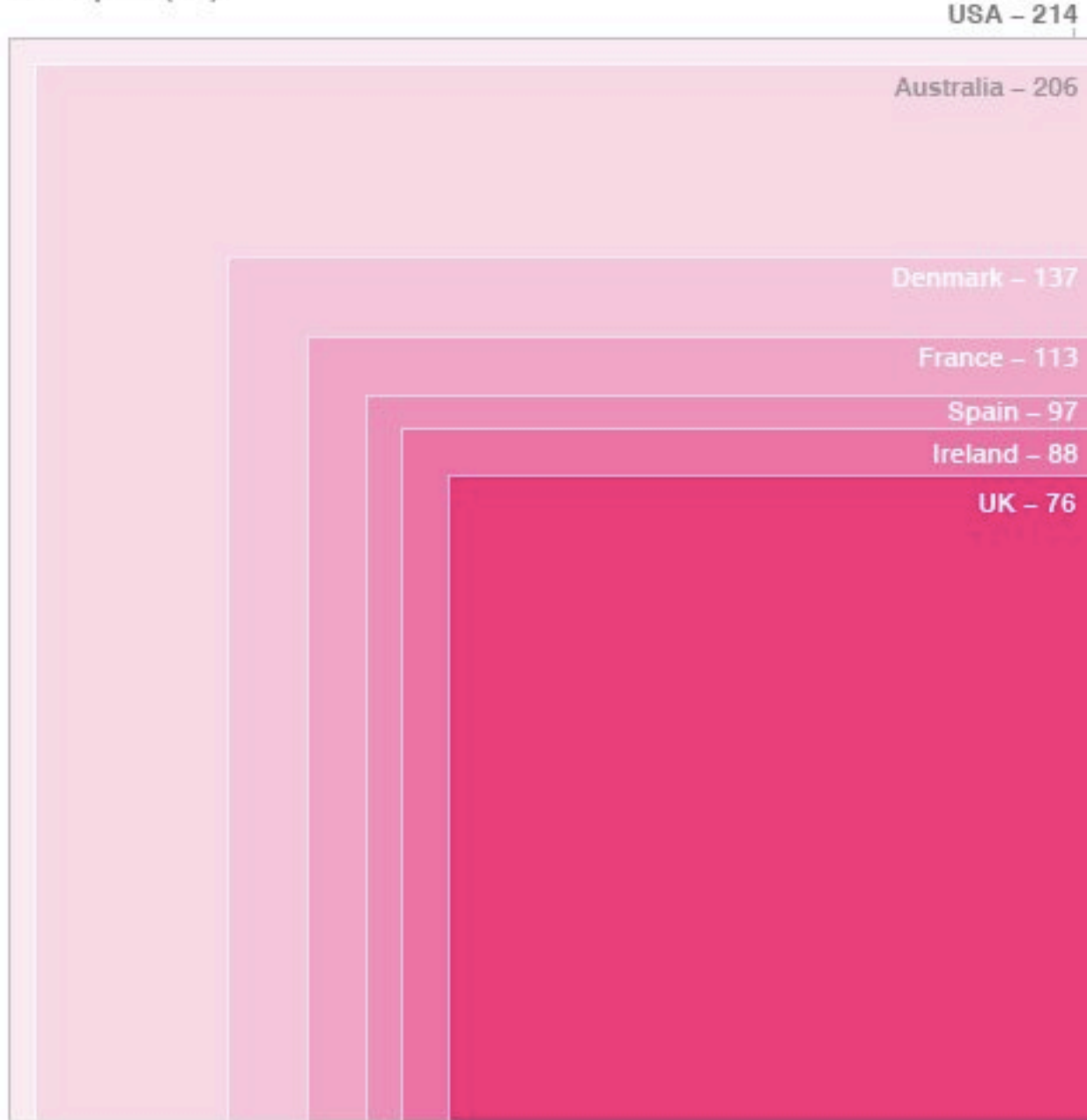
\$425,000 = average unit price in Sydney

many of you will never own a home
unless we do something..



Average floor space of newly built homes

Floor space (m2)



SOURCE: policyexchange, CABE, US Census Bureau

The Cabe survey questioned residents of homes built between 2003 and 2006, in London or within an hour's travel time of the capital.





10 X 10 / 3

100 Architects

10 Critics

PHADON

Jun Igarashi Architects

Hokkaido J

Looking at Jun Igarashi's work, one is struck by the fact that the architect was born and raised in the region of the Japanese island of Hokkaido, where that young Hokkaido architect is now (the region is well known (Susuke Fujiwara is also from this region). Though it is easy to view Japan as a homogeneous, in fact there is great diversity in the location and history. Different peoples arrived from the north, south, and west ended up in the region at the easternmost edge of Japan, and the various characteristics of those groups, along with a mosaic on the map of Japan. In addition, the cultures added their distinctive influences to the different regions as Japan entered the modern era. For example, ever since the mid-nineteenth century, when Christian missionaries came from the United States came to Hokkaido, the region has had a deep relationship with the US.

Since the 1990s, Japanese architecture has started embracing this diversity. Architects are that are closely attuned to local characteristics. Igarashi's Hokkaido has a unique profile, and is conspicuously from other regions. In this climate, the landscape is spacious and the area is relatively sparsely populated. The distinguishing features present a contrast of high density and rugged topography of Hokkaido, and they are visible in Hokkaido's architecture.

The expansiveness and the strong sense of Igarashi's work are deeply reflective of the wide-open spaces of Hokkaido. Kamekura Circle (Tokoro-cho, Hokkaido, 2000) is not immediately recognizable as a house because of the way it stretches out and becomes one with the earth. The lines of Wind Circle's exterior walls are a glimpse of the American influence. By using wooden siding, American especially those by Frank Lloyd Wright, Igarashi takes the link between house and ground. The work goes even further, visible in the horizontality of his interior spaces as well. The form is not a postmodern pastiche of influences. It represents a synthesis of profound Japanese forms.



Life Study Center for Toyota City, Aichi Prefecture, Japan, 2005
This competition entry for Toyota City breaks the traditional barrier between interior and exterior spaces. The building's form is a series of twenty-seven freestanding houses on two levels, whose structural walls support the floor and roof slabs above. Each house has a multi-function. The hallways between the houses create a series of public communication areas within the building.



Photograph of Light Research Institute, Hokkaido Prefecture, Japan, 2003
The building is a research center for light. The building's form is a series of interconnected volumes that create a series of public communication areas within the building.





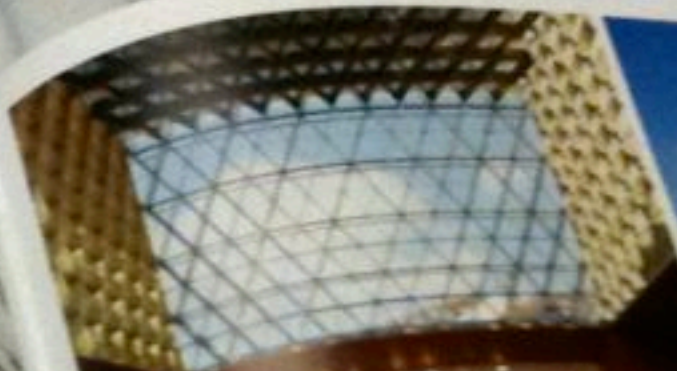
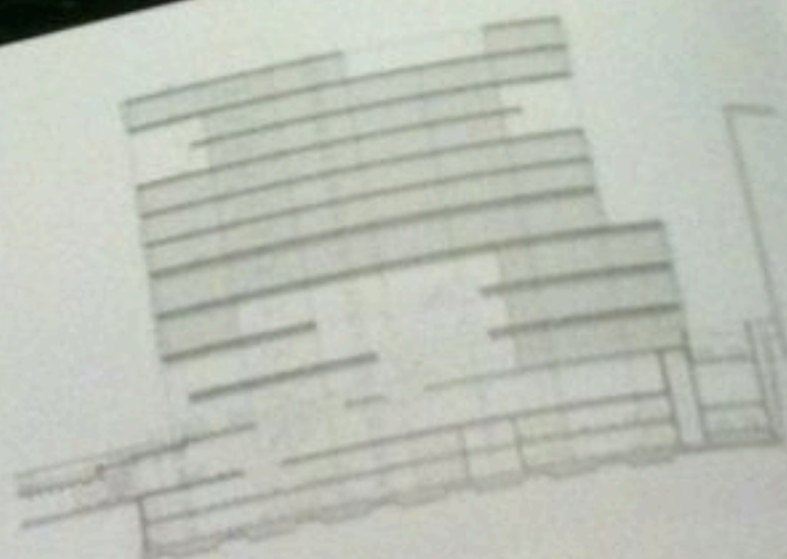
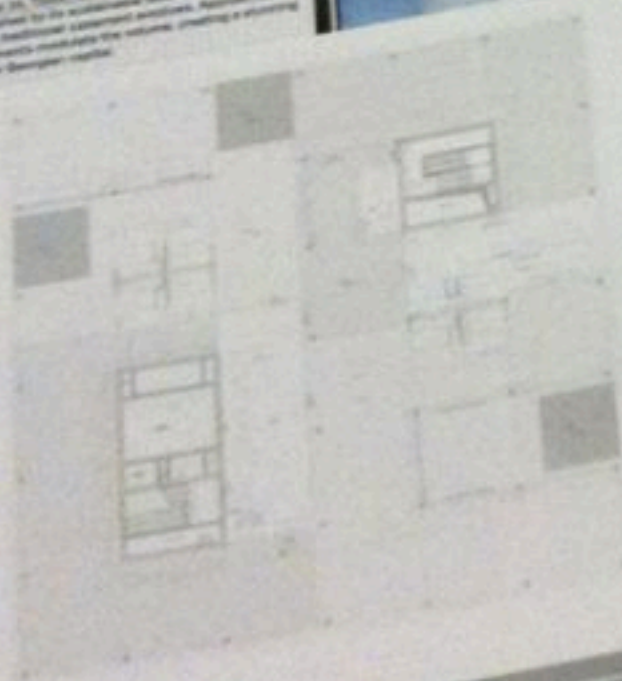
Villa Overgreen, Almere, Netherlands
 2000-06. The Overgreen restaurant building is composed of five separate pavilions, each commissioned by five private clients. On the basis of workshops with the residents, the design resulted in the accommodation, each with its own character. The second story has been rotated a quarter turn in relation to the first floor, giving the residents exceptional orientation, sunlight, and spaciousness.



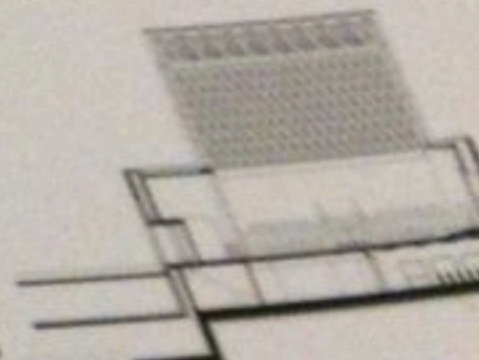
NE



Hybrid High-rise Phase 2A, 10000, Seattle, 2009-10. This phase was high-rise to demonstrate to its sustainable features, which combine new technology with traditional, sustainable elements. Approximately 3,000 glass and aluminum modules make the facade, creating a unique new landmark for the Seattle region.

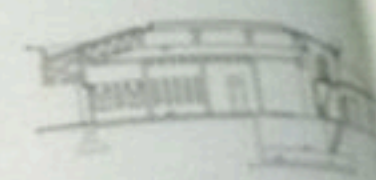
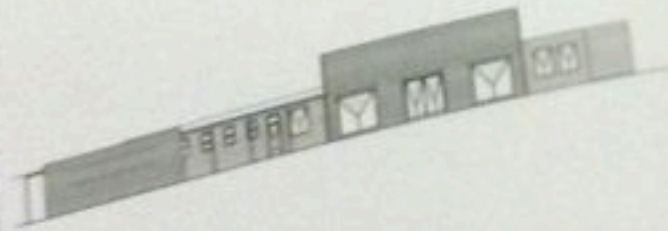


Wandel Hoefer Lorch + Hirsch



Srdjan Jovanovic Weiss/NAO

Philadelphia USA



British journalist Walter Durrain's essays in the early 1950s were critical of architecture and the very idea of Balkan cities of the region. In his "Miserable as Athens," he wrote that the disaster "did not... There are no grand urban schemes... no new cities, and no state planning." In another essay, "BCEC as Critic," Walter reported that during the bombing campaign, "BCEC... the very buildings constructed in this period to symbolize the country's liberation against fascism... came from the West... while... native examples were... are startling examples of... recognizes surprising characteristics of architectural agents... a theory of Balkanization that... transformations of culture... in the former Yugoslavist... communism suddenly gave... and democratic rights. An... been ensued.

Weiss's architectural practice, Weiss/Manfredi Architects (Architectural Office), has proposed a series of projects in the Republic of Serbia, and these are attendant to the largest urban planning project in the country. The architecture is an art of the future, and it has to contend with the history of the country. What people now see, after the war, is a development, might appear unrecognizable, but what the same people remember is a city that is entirely different. Like other new cities in the Republic of Serbia exists some new cities, these two images.

Having spent time studying at Harvard University and collaborated with Herzog & de Meuron in Basel, Shumon has established himself professionally in the United States where he teaches at the University of Pennsylvania in Philadelphia. From this vantage point, Shumon represents a contemporary writer who is not only well-versed in the history of the novel but also in the contemporary condition of the novel. His work is a testament to the fact that the novel is still a viable form of literature in a manner wholly congruent with the condition of twenty-first-century society.



Norfolk Western Park, Singapore, Singapore, 1970. The Norwalks, a new group of buildings for public housing, is located in a park-like setting with many trees. The program consists of a series of buildings of different heights and widths, some of which are connected by a central corridor. The buildings are designed to be integrated with the surrounding environment, and the park-like setting is a key feature of the design.

University of Berlin, 1000-0. The objective of the work was to produce a genetic map of the genome of the bacterium *Escherichia coli* K12. The sequence of the genome is 4.6 million base pairs. The sequence is being used during the construction of the genome map. The sequence is being used during the construction of the genome map. The sequence is being used during the construction of the genome map.



Sunrise on the Park, Chicago, Illinois, USA, 2009-10 This structure's facade is designed to be placed for optimum solar exposure. The surface is oriented at precisely 17 degrees to enter the apartments during winter for passive solar warming and to keep it out during the summer to reduce the need for air-conditioning.



The commission for the **Bergl Spectrum Starlight Theater**, in 1987, proved to be an auspicious work for Studio Gang Architects, established earlier that year. Not only did it launch the founding principal, **James Gang**, into the Architectural ranks of the Chicago architectural community, but the building's striking kinetic roof became an instant success on the local scene of **Rock Lake College**. It also introduced Gang's design style and courage as a designer, characteristics that have greatly contributed to the growth of her work of practice and teaching nurtured this research, we'd done Gang's interest in new materials and expand potential for architecture.

The **Academy** is one of Gang's most recent and significant works. Situated in a few blocks away from **Lake Michigan** and overlooking **Millennium Park**, the 80-story hotel and residential high-rise, with retail and commercial space at its base, is an impressive and iconic presence on the city skyline. The predominantly glass tower is reinforced as it is shaded by a myriad of colorful concrete balconies or terraces, extending out to create the building a multitude of aesthetic views toward Chicago skyline.

Sunrise on the Park is another residential building near the University of Chicago, overlooking **Millennium Park**. Its facade is angled precisely to maximize sunlight in the winter and shade in the summer. The result is a 28-story building where spectacular and interesting elevation.

The **First Cultural Environmental Center**, located on the South Side of Chicago in the vicinity of **Hard Rock Stadium**, is an exemplary work whose core mission is to be an ecological awareness in the Chicago area. The design incorporates sustainable material from the surrounding industrial area. Recycled steel that structures and terraces of the building, resulting in the appearance of a giant for the center, which will look out to be a beautiful and active urban presence.



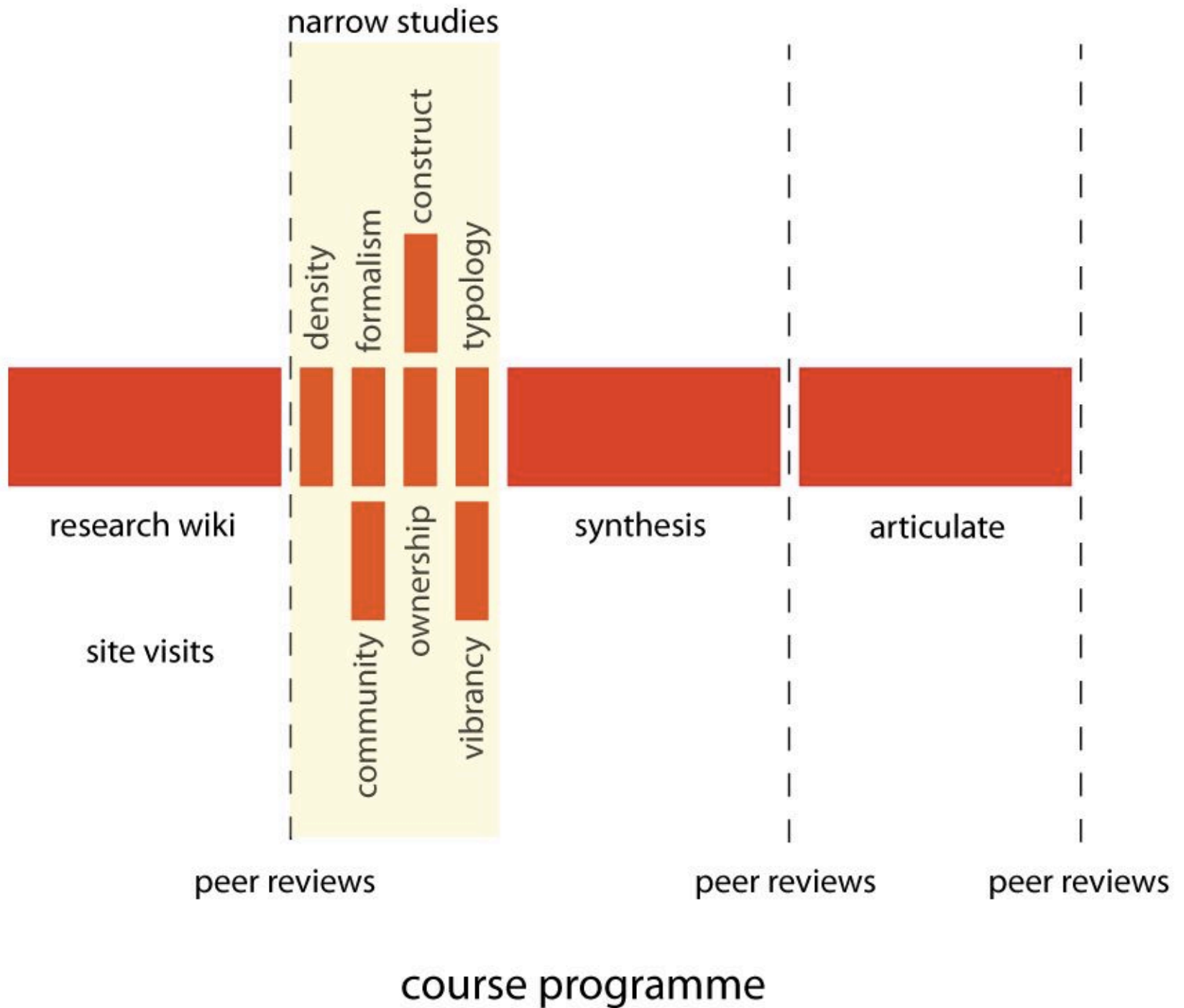
First Cultural Environmental Center, Chicago, Illinois, USA, 2009-10 The project was a challenge for Studio Gang Architects, as it required a design that would be both a landmark and a community center. The building's facade is designed to be both a landmark and a community center.

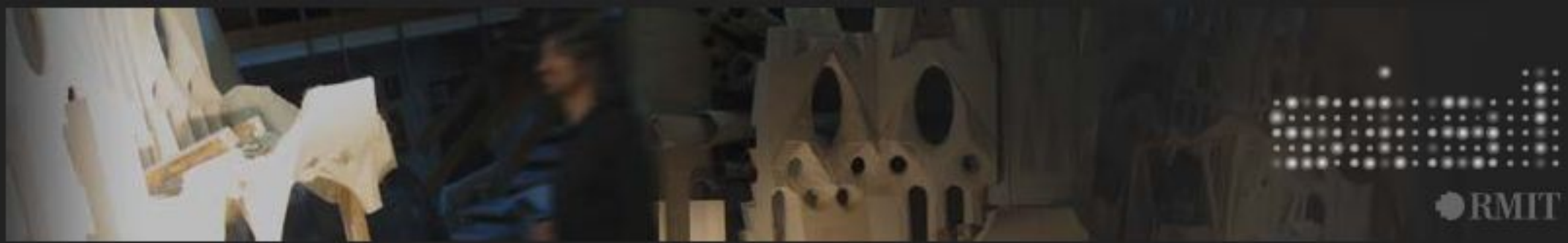











[HOME](#)
[ABOUT](#)
[EVENTS](#)
[COURSES](#)
[PROJECTS](#)
[RESOURCES](#)
[PEOPLE](#)

CURRENT NEWS

19 October 2009

*The Urban Soundscape Project -
Case Studies of Urban Soundscape
Systems in Melbourne*

7 October 2009

*Design Modelling Symposium in
Berlin*

16 September 2009

*27th eCAADe Conference /
September 16-19, 2009 / ISTANBUL
- TURKEY*

15 September 2009

*SIAL PhD student Jerome Frumar to
have two papers published*

7 September 2009

*Title: Get Real about Buildings,
Monday 7 September 2009, 12.30 to
1.00 pm, at SIAL Presentation Room
(97.3.02)*

SELECTED PROJECTS



Tools for
Conviviality



Memory
Games



Pavilions for
New
Architecture



Beyond
Representation



Strange
Procedures II



Architectures of
Invisible Presence



THUMPA



Architectural
Biennial Beijing
2004



Flexible 3D
Modelling



Digital Antipodes
and
Morpho-Revelations



Politics of
Water



Smart
Geometry



LivingLab 01 :
Vertigo



the Animal



stranger than
fiction

CURRENT/UPCOMING EVENTS